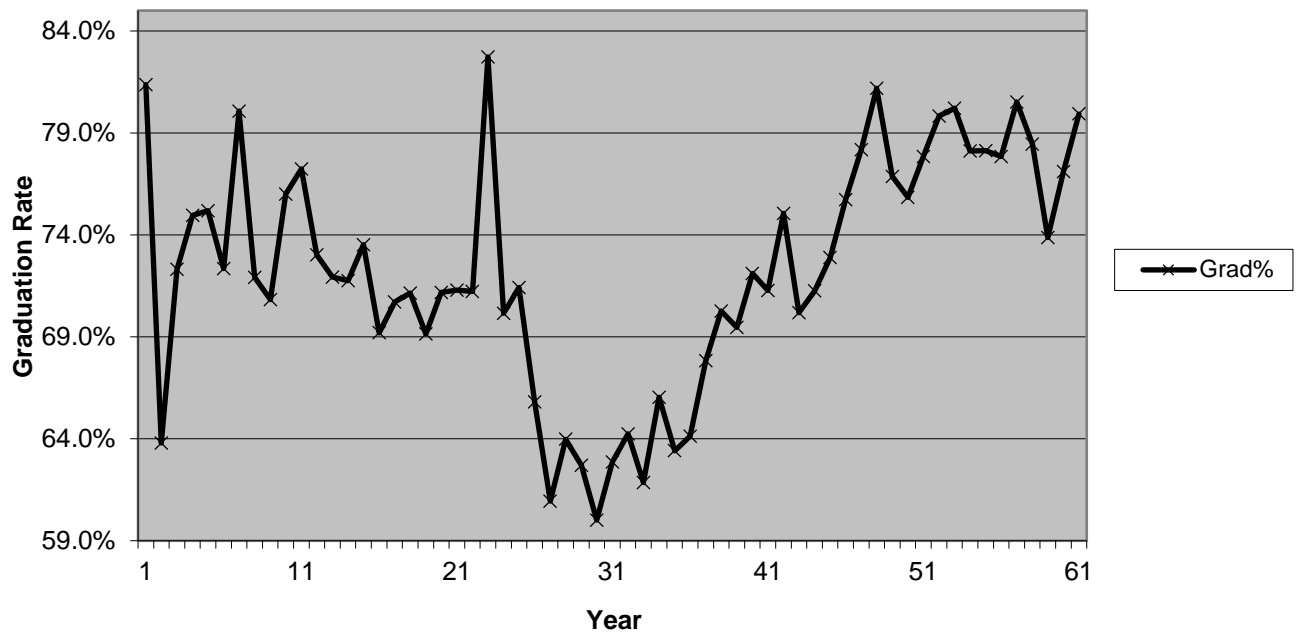


Class	4	5	6	7	8	Otbks	Grad	Tbks	Ntotal	Ngrad	Accept	Grad%	Living	Alive%	Corps Size
1947-1948	558	52	1			(53)	611	36	594	136	730	81.4%	143	23%	2,480
1949	538	36				(36)	574	47	585	332	917	63.8%	296	52%	2,396
1950	623	47				(47)	670	35	658	252	910	72.3%	405	60%	2,343
1951	440	35				(35)	475	12	452	151	603	75.0%	275	58%	2,304
1952	515	12				(12)	527	12	527	174	701	75.2%	320	61%	2,321
1953	500	12				(12)	512	26	526	201	727	72.4%	336	66%	2,275
1954	607	26				(26)	633	28	635	158	793	80.1%	426	67%	2,298
1955	442	28				(28)	470	24	466	182	648	71.9%	337	72%	2,238
1956	456	24				(24)	480	15	471	194	665	70.8%	370	77%	2,274
1957	532	14				(14)	546	22	554	175	729	76.0%	415	76%	2,372
1958	551	21	1			(22)	573	29	580	171	751	77.2%	446	78%	2,350
1959	470	28	1			(29)	499	28	498	184	682	73.0%	394	79%	2,369
1960	521	28	1			(29)	550	30	551	215	766	71.9%	451	82%	2,390
1961	504	30				(30)	534	22	526	207	733	71.8%	441	83%	2,412
1962	579	22				(22)	601	15	594	214	808	73.5%	514	86%	2,493
1963	489	15				(15)	504	21	510	227	737	69.2%	431	86%	2,464
1964	545	20				(20)	565	20	565	234	799	70.7%	494	87%	2,534
1965	575	20	1			(21)	596	24	599	243	842	71.1%	531	89%	2,695
1966	555	24				(24)	579	3	558	249	807	69.1%	511	88%	2,937
1967	580	3				(3)	583	3	583	236	819	71.2%	525	90%	3,058
1968	703	3				(3)	706	2	705	284	989	71.3%	662	94%	3,248
1969	798	2				(2)	800	9	807	326	1,133	71.2%	739	92%	3,405
1970	740	9				(9)	749	7	747	156	903	82.7%	715	95%	3,633
1971	723	6				(6)	729	15	738	314	1,052	70.2%	696	95%	3,799
1972	810	11	1			(12)	822	12	822	329	1,151	71.4%	784	95%	3,921
1973	930	11	3			(14)	944	13	943	490	1,433	65.8%	906	96%	3,972
1974	819	12	1	1		(14)	833	14	833	534	1,367	60.9%	801	96%	3,877
1975	848	14				(14)	862	8	856	482	1,338	64.0%	830	96%	3,943
1976	847	8				(8)	855	14	861	512	1,373	62.7%	834	98%	3,995
1977	710	13			1	(14)	724	114	824	549	1,373	60.0%	709	98%	4,061
1978	871	109	1			(110)	981	26	897	530	1,427	62.9%	955	97%	4,188
1979	896	22	5			(27)	923	22	918	511	1,429	64.2%	902	98%	4,175
1980	892	18	3			(21)	913	16	908	560	1,468	61.9%	903	98.9%	4,136
1981	945	12	3	1		(16)	961	25	970	499	1,469	66.0%	943	98%	4,204
1982	874	21	2	1		(24)	898	17	891	514	1,405	63.4%	879	98%	4,284
1983	874	15	4	1		(20)	894	13	887	496	1,383	64.1%	884	98.9%	4,368
1984	972	11	2		1	(14)	986	23	995	472	1,467	67.8%	972	98.6%	4,492
1985	1,047	14	2			(16)	1,063	21	1,068	452	1,520	70.3%	1,053	99.1%	4,479
1986	982	15	9			(24)	1,006	10	992	436	1,428	69.5%	987	98%	4,445
1987	1,030	6	6			(12)	1,042	7	1,037	401	1,438	72.1%	1,033	99.1%	4,390
1988	976	4	1			(5)	981	19	995	401	1,396	71.3%	970	98.9%	4,328
1989	1,046	16	1	3		(20)	1,066	16	1,062	353	1,415	75.1%	1,055	99.0%	4,280
1990	917	10	3	1		(14)	931	15	932	396	1,328	70.2%	923	99.1%	4,217
1991	949	11	4		1	(16)	965	20	969	391	1,360	71.3%	952	98.7%	4,297
1992	943	14	3	2		(19)	962	20	963	358	1,321	72.9%	958	99.6%	4,290
1993	997	16	4	1		(21)	1,018	26	1,023	328	1,351	75.7%	1,012	99.4%	4,246
1994	1,022	19	3	2		(24)	1,046	21	1,043	291	1,334	78.2%	1,036	99.0%	4,163
1995	992	16	6	1		(23)	1,015	14	1,006	233	1,239	81.2%	1,008	99.3%	3,999
1996	906	13	5	1		(19)	925	14	920	277	1,197	76.9%	916	99.0%	3,937
1997	910	6	1			(7)	917	16	926	295	1,221	75.8%	907	98.9%	3,964
1998	865	10	8			(18)	883	27	892	254	1,146	77.8%	874	99.0%	3,981
1999	929	14	6			(20)	949	29	958	242	1,200	79.8%	940	99.1%	4,088
2000	934	19	12			(31)	965	23	957	236	1,193	80.2%	960	99.5%	4,010
2001	904	15	10	1		(26)	930	31	935	262	1,197	78.1%	926	99.6%	3,983
2002	960	21	8			(29)	989	26	986	276	1,262	78.1%	976	98.7%	3,985
2003	856	13	10			(23)	879	29	885	252	1,137	77.8%	875	99.5%	3,913
2004	922	20	12			(32)	954	24	946	229	1,175	80.5%	944	99.0%	4,039
2005	912	15	8	1		(24)	936	20	932	256	1,188	78.5%	928	99.1%	4,019
2006	856	11	8	1		(20)	876	26	882	312	1,194	73.9%	874	99.8%	
2007	984	13	8	1		(22)	1,006	16	1,000	297	1,297	77.1%	1,004	99.8%	
2008	952	16	13	1		(30)	982	0	952	239	1,191	79.9%	982	100.0%	
												72.0%		90.0%	
												71.7%		91.6%	
												72.8%		91.4%	

Grad%



Alive%

